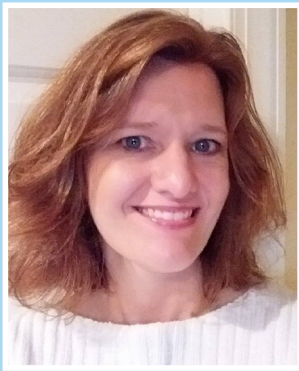


# UNC School of Social Work 2019-2020 Clinical Lecture Series

## FOCUS ON FAMILY AND DISABILITY SEMINARS

# Demystifying Dyslexia: Breaking Down Barriers and Developing Common Language



*A presentation by*

**Ginger Starling, M.Ed.**

North Carolina Department of Public Instruction

**Tuesday, September 10, 2019, 12-2 pm**

**Tate-Turner-Kuralt Auditorium, UNC School of Social Work**

Participants will gain common language and an understanding of dyslexia that is relevant for the community, families, and schools. This includes an overview of dyslexia and its characteristics and myths and facts regarding policy, assessment, identification and instruction. This presentation is a companion to the NCDPI Dyslexia Topic Brief.

- All in-person lectures will be offered at a discount and include lunch to encourage face-to-face engagement and community building
- In-Person – \$25.00
- Live-Stream – \$35.00
- Discount for family members/caregivers – \$15.00
- Current UNC-SSW students, staff, faculty, field instructors, and task supervisors – Fee waived
- Everyone is welcome, scholarships also available. Contact Carol Ann Hincy at [chincy@email.unc.edu](mailto:chincy@email.unc.edu)

**Lunch provided (11:15am – 12:00pm) No Charge**

**REGISTER AT** <http://ssw.unc.edu/sswevents/> (choose Focus on Family and Disability Seminar Series)

**ADA STATEMENT** If you require any of the auxiliary aids or services identified in the Americans with Disabilities Act in order to participate in this program, please call us at 919-966-0396 no later than ten business days before the program.

**Additional questions? Contact Barbara Leach at** [leach@email.unc.edu](mailto:leach@email.unc.edu) **or 919-966-0396**

